

**0F3SR620Z08000A  
FYA-S160**

**YAMAHA R3 2015/2016  
WET SLIPPER CLUTCH**

**MOUNTING INSTRUCTIONS**

The Drum/Hub group is supplied pre-assembled. In case of need, as to check the ramps wear, please see hereinafter the specific procedure to disassemble the Drum/Hub group.  
Place the Drum/Hub group on the drive shaft..

**Replace the original clutch plates, keeping them in the original sequence, please keep apart original flat and conical shims of smaller diameter referring to others dics, Total plate set higness must be 30.6 mm + 0,-1,0,2 mm.**

Check that the drum stopper lock screw (13) do not stick out from the surface of the drum stopper (14) where the spring stopper plate (4) will be placed. Verify that the secondary spring support (12) is correctly placed in its seat in the drum (15). Place the secondary spring (11) in the drum (15) with a small amount of grease. Check that the primary spring support (9) is correctly placed in its seat in the pressure plate (10). Place the pressure plate (10) f in its seats on the drum (15). Place the primary spring (8) on the pressure plate (10).

Pre-assemble the spring stopper group: keep the spring stopper plate (7) with the groove for the bearing facing up as shown in the drawing, place the ball bearings and then place the spring stopper hub (4).

Insert the spring stopper group into the pressure plate (10), so that the 9 wings of the spring pusher plate (7) overlap the 9 tips of the spring (8).

Insert the notched washer (5) with the convex part facing up and then the spring stopper hub (4). Tighten the spring stopper hub (4) onto the drive shaft using tool (18) included and lock it with a dynamometric wrench to the torque suggested by the manufacturer. We suggest you to use the specific tool (UTL-0030) (not included).

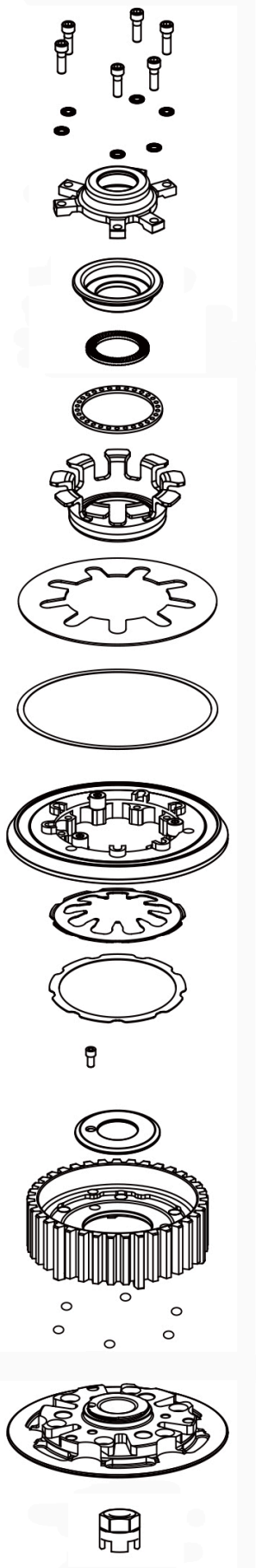
Pre-assemble the bearing rest group: mount the clutch pushrod piece and the bearing of the original clutch into the bearing rest (3). Place the entire bearing rest into the specific holes in the pressure plate (10) taking care of placing it correctly in these holes and fix it with the six screws (1) and the six notchd washers (2).

**Once the mounting operations are completed, operate the clutch lever more than once to check that pressure plate correctly activate the clutch opening and closing, then mount the clutch guard.**

**DRUM/HUB UN-INSTALL PROCEDURE**

**ATTENTION: DO NOT perform this operation before removing the clutch from the bike.** Remove the drum stopper lock screw (13), rotate the drum stopper hub (14) clockwise by 60° and then remove it. The hub (17), the drum (15) and the steel balls (16) now can be disassembled.

**TO RE-ASSEMBLE THE GROUP:** place the 6 steel balls (16) at the bottom of the grooves of the hub (18) using a small amount of grease, then place the drum (15) on the hub (17) in an at-rest position. Position the drum stopper hub (14) on the hub (17), aligning its three wings with the three housings on the hub (17), then rotate it until the holes of the two parts are aligned, and finally replace completely the screw (13). ). **Check that the drum stopper (14) is correctly locked on the hub (17) and that the drum stopper lock screw (13) do not stick out from the surface where the spring stopper hub (4) will be placed.**



- (1) 901 VT 017  
SCREWS
- (2) 901 RD 007  
NOTCHED WASHER
- (3) 0F30S620Z080004  
BEARING REST
- (4) 0F30S620Z080007  
SPRING STOPPER HUB
- (5) 0F3SR540D220017  
NOTCHED WASHER
- (6) 003MG007  
CAGED BEARING
- (7) 0F3CR620E07A008  
SPRING PUSHER PLATE
- (8) OS1121  
PRIMARY SPRING
- (9) 0F3SR540B140015  
PRIMARY SPRING SUPPORT
- (10) 0F30S620U070003  
PUSHER PLATE
- (11) OS2085  
SECONDARY SPRING
- (12) 0F3SR540B140016  
SECONDARY SPRING SUPPORT
- (13) 0F3SR300J070086  
DRUM STOPPER LOCK SCREW
- (14) 0F30S620U070009  
DRUM STOPPER
- (15) 0F30S620Z08002A  
DRUM
- (16) 001MG025  
BALLS 1/4"
- (17) 0F30S620U07001A  
HUB
- (18) 008AMY002  
TOOL

**GENERAL SAFETY REGULATIONS**

- IN THIS SHEET ARE REPORTED THE DIRECTIONS TO PERFORM CORRECTLY THE CLUTCH ASSEMBLY OPERATIONS.
- STM RESERVES THE RIGHT, WITHOUT NOTICE, TO INTRODUCE ANY TECHNICAL CHANGE WHENEVER DEEMED IT TO BE NECESSARY TO IMPROVE FUNCTION AND QUALITY OF THE PRODUCTS.
- ASSEMBLY OPERATIONS MUST BE PERFORMED BY A SKILLED TECHNICIAN AND MUST BE SCRUPULOUSLY OBSERVED.
- BEFORE MOUNTING THE CLUTCH MAKE A COMPLETE INSPECTION OF THE MOTORBIKE COMPONENTS, IN ORDER TO VERIFY THE POSSIBLE PRESENCE OF FAULTS OR ANOMALIES ON THE VEHICLE.
- MAKE SURE THAT THERE ARE NO MISSING/DAMAGED PARTS IN THE CLUTCH KIT.
- SOME PARTS OF THE CLUTCH AND ITS COMPONENTS CAN HAVE SHARP SURFACE: HANDLE WITH CARE.
- SOME COMPONENTS OF THE CLUTCH, BECAUSE OF THEIR SMALL DIMENSIONS CAN BE SWALLOWED; KEEP AWAY FROM CHILDREN.

**STM ITALY**  
Via A. Olivetti 15 - 10020 - Riva presso Chieri (TO)  
www.stmitaly.com - contact@stmitaly.com

