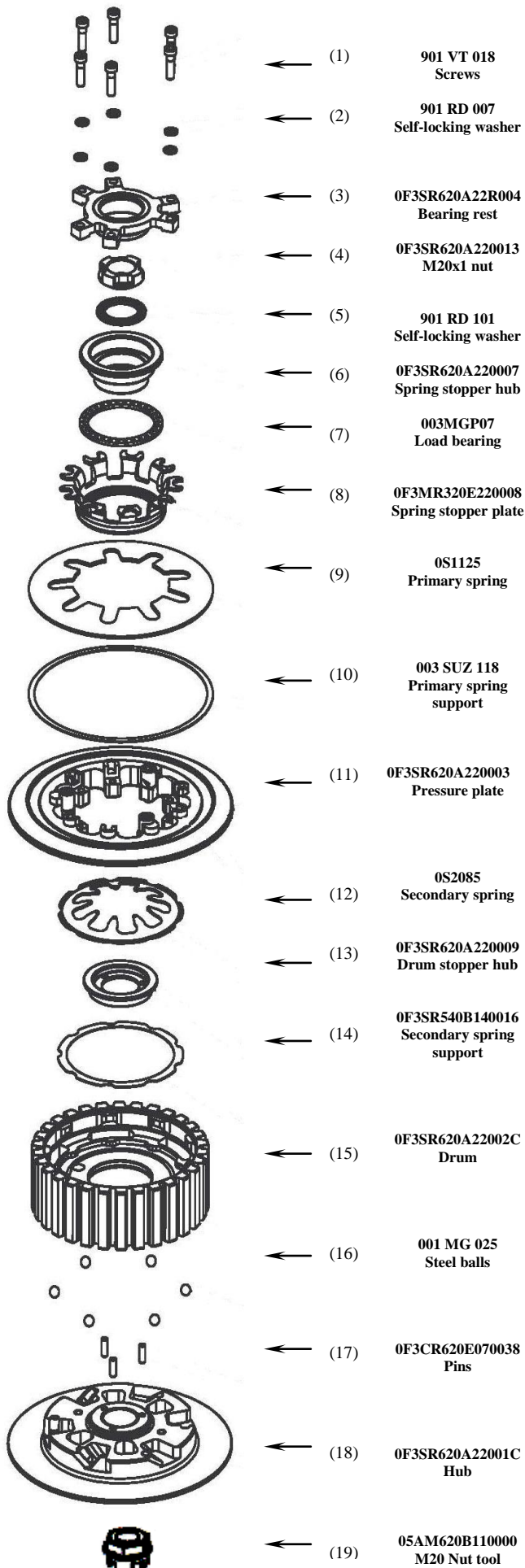


0F3SR620A220000

FYA-S090

# SLIPPER CLUTCH FOR YAMAHA R1 up to 2003

## ASSEMBLY INSTRUCTIONS



Pre-assemble the hub pack: place the 6 steel balls (16) at the bottom of the grooves of the hub (18) using a small amount of grease then fix the drum (15) onto the hub with an M6x1 screw in an at-rest position.

Insert the hub pack onto the main shaft.

Reinstall the original clutch plates. The total thickness of the pack must be 37.5 mm.

**N.B: if the original disc pack includes two rings, DO NOT use them.**

Remove the previously mounted screw.

With a small amount of grease place the drum stopper hub (13) on the clutch hub (18).

Insert the secondary spring (14) in the drum (15).

Place the secondary spring (12) in the drum (15) housing with a small amount of grease.

Insert the pressure plate (11) in the drum (15) and position the primary spring (9).

Insert the spring stopper group (8) into the previously mounted spring with the with the shaped part facing up as shown in the picture, making the 9 wings overlap the 9 tips of the spring (9). Place the load bearing (7) and finally the spring stopper hub (6).

Screw the nut (4) onto the drive shaft, locking with the dynamometric key to the torque suggested by the manufacturer. For the assembly please use the tool (19) supplied with the clutch.

Pre-assemble the complete bearing rest: mount the clutch pushrod piece and the bearing of the original clutch into the bearing rest (3) housing.

Position the bearing rest (3) into the relevant opening of the pressure plate (11) taking care to correctly place it in the openings. Place the 6 M5 self-locking washers (2) in the six screws (1), apply a small quantity of medium threadlock on the screws and lock them to 2.3 N/m.

**NB: once the assembly is completed, repeatedly operate the clutch lever to check that pressure plate correctly performs the opening and closing movements.**

### GENERAL SAFETY REGULATIONS

- IN THIS SHEET ARE REPORTED THE DIRECTIONS TO PERFORM CORRECTLY THE CLUTCH ASSEMBLY OPERATIONS.
- STM RESERVES THE RIGHT, WITHOUT NOTICE, TO INTRODUCE ANY TECHNICAL CHANGE WHENEVER DEEMED IT TO BE NECESSARY TO IMPROVE FUNCTION AND QUALITY OF THE PRODUCTS.
- ASSEMBLY OPERATIONS MUST BE PERFORMED BY A SKILLED TECHNICIAN AND MUST BE SCRUPULOUSLY OBSERVED.
- BEFORE MOUNTING THE CLUTCH MAKE A COMPLETE INSPECTION OF THE MOTORBIKE COMPONENTS, IN ORDER TO VERIFY THE POSSIBLE PRESENCE OF FAULTS OR ANOMALIES ON THE VEHICLE.
- MAKE SURE THAT THERE ARE NO MISSING/DAMAGED PARTS IN THE CLUTCH KIT.
- STM ITALY SRL PRODUCTS ARE EXCLUSIVELY INTENDED FOR COMPETITION ON TRACKS, NOT SUITABLE ON MOTORBIKES ON PUBLIC ROADS.
- SOME PARTS OF THE CLUTCH AND ITS COMPONENTS CAN HAVE SHARP SURFACE: HANDLE WITH CARE.
- SOME COMPONENTS OF THE CLUTCH, BECAUSE OF THEIR SMALL DIMENSIONS CAN BE SWALLOWED: KEEP AWAY FROM CHILDREN.

