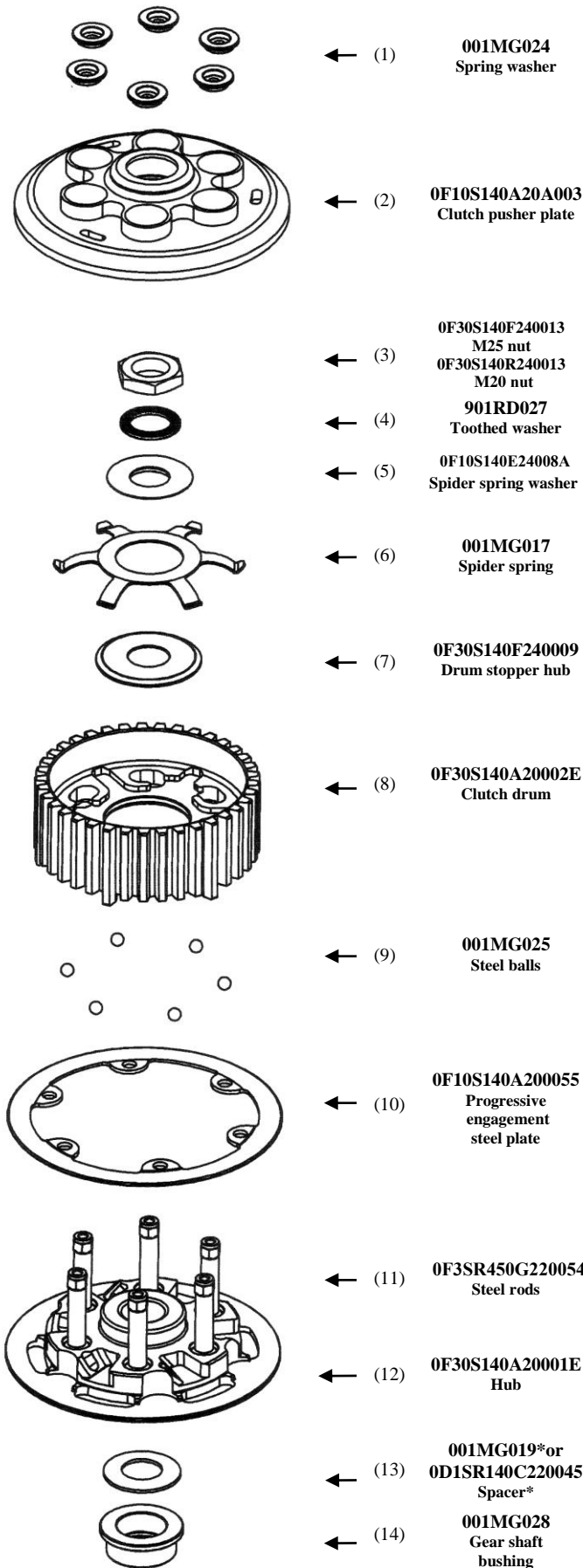


# 001STM000 / FDU-S030

# SLIPPER CLUTCH KIT DUCATI ORIGINAL

## INSTALLATION INSTRUCTIONS



← (1) 001MG024  
Spring washer

← (2) 0F10S140A20A003  
Clutch pusher plate

← (3) 0F30S140F240013  
M25 nut  
0F30S140R240013  
M20 nut

← (4) 901RD027  
Toothed washer

← (5) 0F10S140E24008A  
Spider spring washer

← (6) 001MG017  
Spider spring

← (7) 0F30S140F240009  
Drum stopper hub

← (8) 0F30S140A20002E  
Clutch drum

← (9) 001MG025  
Steel balls

← (10) 0F10S140A200055  
Progressive  
engagement  
steel plate

← (11) 0F3SR450G220054  
Steel rods

← (12) 0F30S140A20001E  
Hub

← (13) 001MG019\*or  
0D1SR140C220045  
Spacer\*

← (14) 001MG028  
Gear shaft  
bushing

- Mount the basket on the engine seat and fix it using the 8 screws of the original clutch (**ONLY FOR STM BASKET**).
- Insert the o-ring supplied with the original clutch in the seat of the carter axle box (14).
- Position the gear shaft bushing (14) into the carter seal and push it till reaches the complete stop.
- If installing with Ducati OEM basket fit the (13) spacer (3 mm)
- If installing with STM basket (Z12 or Z48) fit the (13) spacer (1,5 mm)
- Insert the correct washer on the gear shaft.
- Assemble hub kit: put progressive engagement plate (10) on hub (12), with the step facing up, put it correctly into its seats, then check that pushing on one side the other side lifts up.
- Put 6 steel balls (9), into the grooves with some grease.
- Fix the clutch drum (8) on the clutch hub (12) at rest position.
- Put with some grease the drum stopper hub (7) on hub (12).
- Insert the hub pack on the gear shaft.
- Insert the spider spring (6) in its own seat.
- Insert the spider spring washer (5).
- Insert the toothed washer (4) with the convex side facing up. **Use the (3) nut for M25 drive shaft threads.**
- Tighten using the dynamometric tool at the torque suggested by the manufacturer.
- Insert clutch plates starting with a sintered plate and ending with a steel plate. The total height of the plates stack must be between 36 and 36.5 mm.
- Insert in the inner part of the pressure plate (2), the ball bearing and the clutch pushrod pin of the original clutch.
- Position the pressure plate (2) on the clutch drum (8) and insert the original clutch springs in the seats of the pressure plate.
- Mounting the spring washer (1) using the screws of the original clutch.

**NB: Once completed the assembly, repeatedly operate the clutch lever, checking that the pressure plate performs correctly the opening and closing movements.**

**For a road use of the clutch you have to check clutch plates every 2000 km.**

Please verify that the clutch plates thickness is between 36,5 mm – 35,0 mm. If it is inferior to 35,0 mm please replace a 1,5 mm steel plate with a 2 mm steel plate.

For a racing use of the clutch we suggest to check the clutch plates thickness frequently.

### GENERAL SAFETY REGULATIONS

- IN THIS SHEET ARE REPORTED THE DIRECTIONS TO PERFORM CORRECTLY THE CLUTCH ASSEMBLY OPERATIONS.
- STM RESERVES THE RIGHT, WITHOUT NOTICE, TO INTRODUCE ANY TECHNICAL CHANGE WHENEVER DEEMED IT TO BE NECESSARY TO IMPROVE FUNCTION AND QUALITY OF THE PRODUCTS.
- ASSEMBLY OPERATIONS MUST BE PERFORMED BY A SKILLED TECHNICIAN AND MUST BE SCRUPULOUSLY OBSERVED.
- BEFORE MOUNTING THE CLUTCH MAKE A COMPLETE INSPECTION OF THE MOTORBIKE COMPONENTS, IN ORDER TO VERIFY THE POSSIBLE PRESENCE OF FAULTS OR ANOMALIES ON THE VEHICLE.
- MAKE SURE THAT THERE ARE NO MISSING/DAMAGED PARTS IN THE CLUTCH KIT.
- SOME PARTS OF THE CLUTCH AND ITS COMPONENTS CAN HAVE SHARP SURFACE: HANDLE WITH CARE.
- SOME COMPONENTS OF THE CLUTCH, BECAUSE OF THEIR SMALL DIMENSIONS CAN BE SWALLOWED: KEEP AWAY FROM CHILDREN.

\* The spacer depends by the basket used:

- Ducati OEM Basket: cod. 0D1SR140C220045 (3 mm)
- STM Basket: cod. 001MG019 (1,5 mm)

**STM ITALY**  
Via A. Olivetti 15 - 10020 - Riva presso Chieri (TO)  
www.stmitaly.com - contact@stmitaly.com

